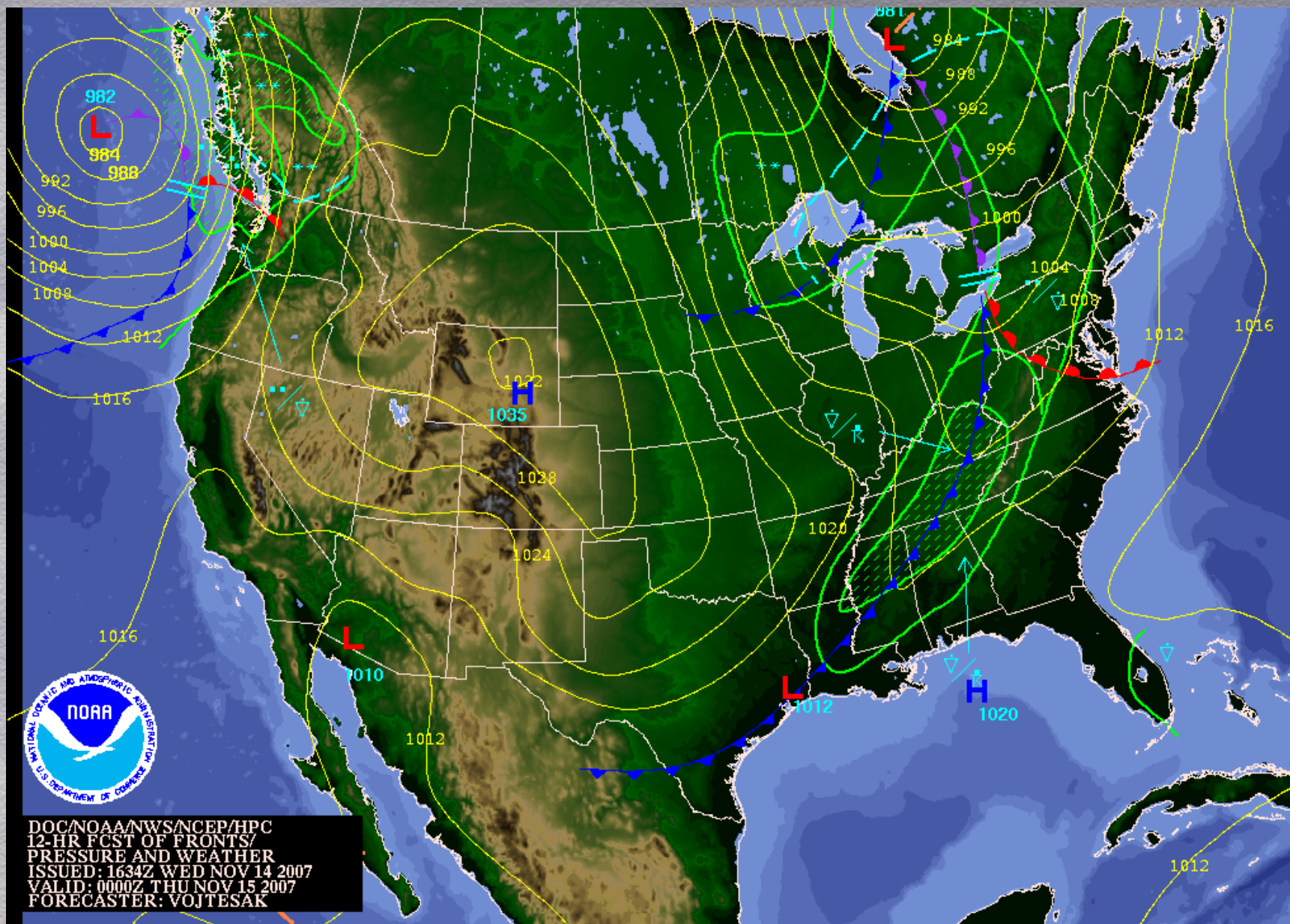
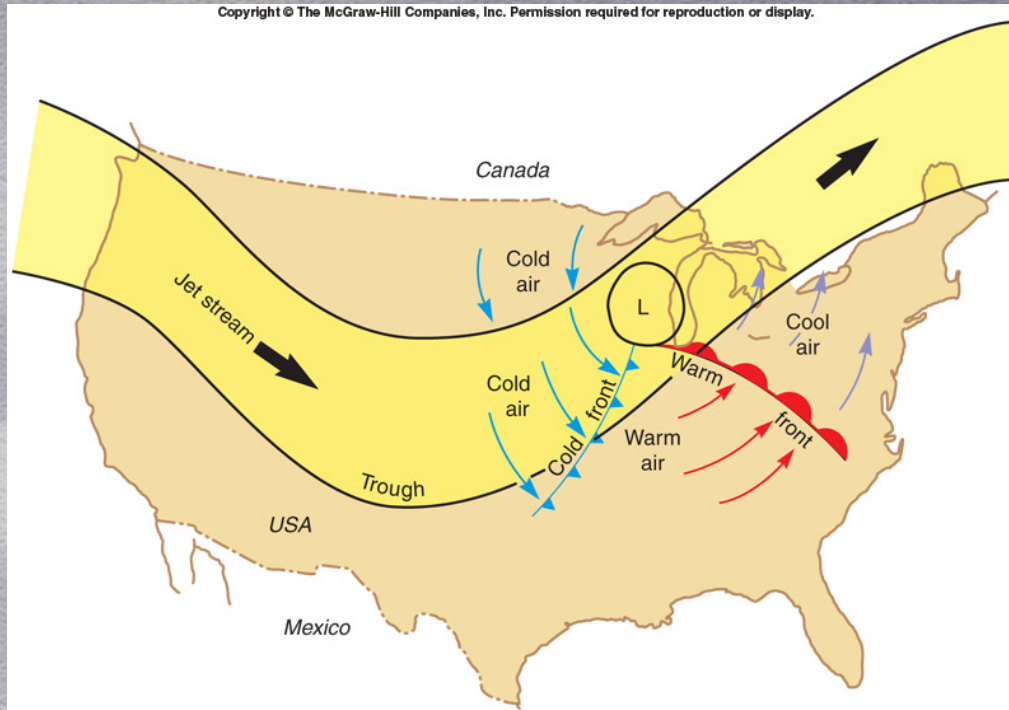


Weather Map (Nov 14, 2007)



Wave Cyclones – Large Storms



- mid-latitude cyclone
- extra-tropical cyclone

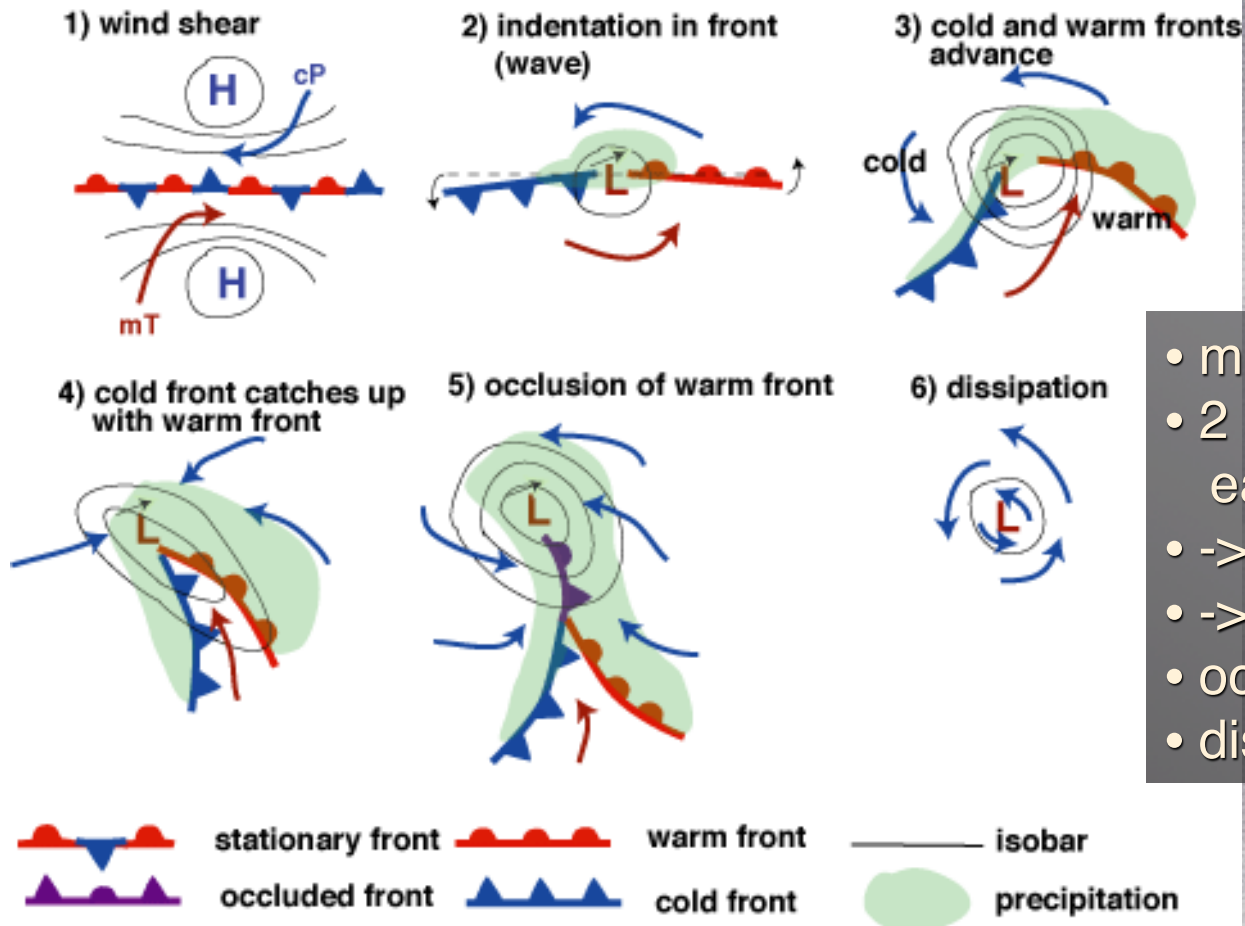
- in the U.S.: large low-pressure system moving W to E
- pushed by jet stream

source: Abbott "Natural Disasters"

Fig. 13.24

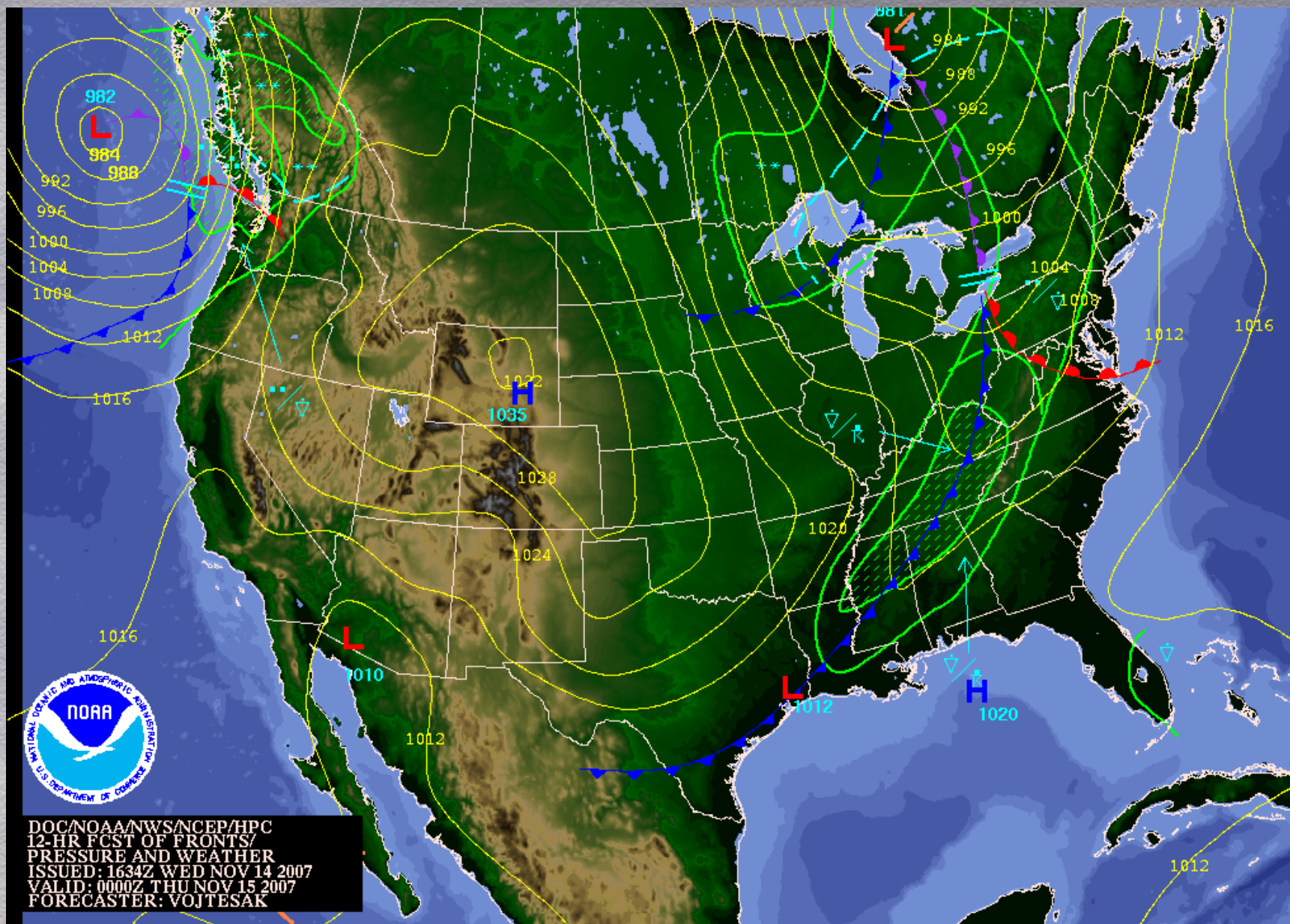
Wave Cyclones

Stages of a Wave Cyclone



- mid-latitudes
- 2 air masses shear past each other
- -> wave, warm/cold front
- -> cyclone
- occluded warm front
- dissipation

Weather Map (Nov 14, 2007)



Wave Cyclone Animation

source: Wikipedia



Cyclone Oratia – Oct 2000



- Western Europe
- fiercest to hit UK since 1987
- comma shape
- long cold front
- central pressure 941 mbar
- 176 km/h gusts
- 16 fatalities

Rotterdam: passage of cold front caused a harbor seiche (1.5 h period)

source: Wikipedia