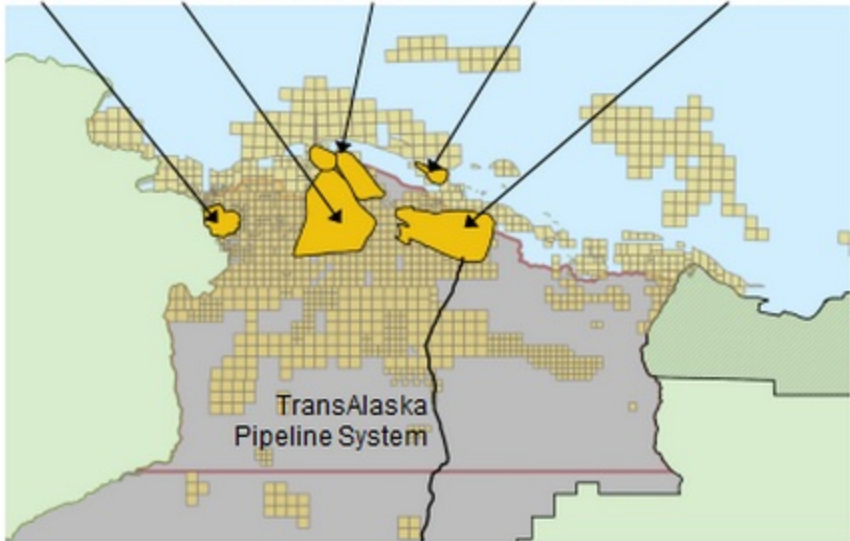


Alaska crude oil production regions

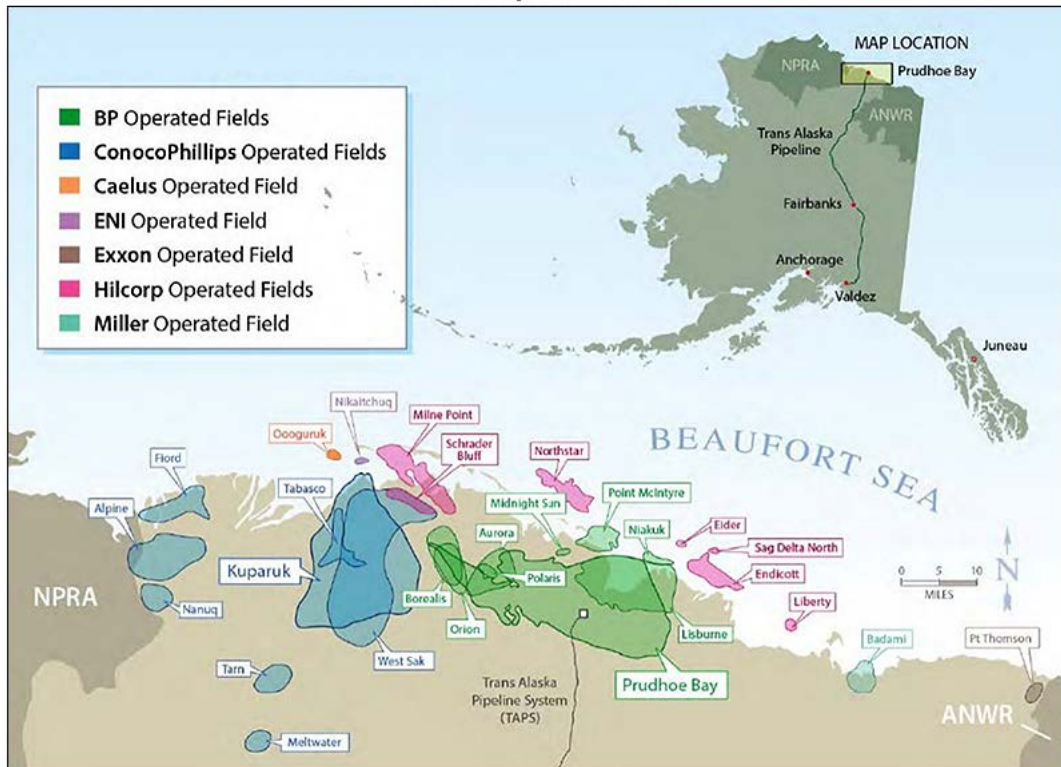
Alpine, Kuparuk River, Nikaitchuq Unit, Northstar, and Prudhoe Bay



Source: U.S. Energy Information Administration, IHS EDIN, Bureau of Land Management, Bureau of Ocean Energy Management, State of Alaska Department of Natural Resources Division of Oil and Gas, ESRI

Current Alaska oil and natural gas activity is concentrated in three main regions: North Slope Offshore, Central North Slope, and South Alaska.

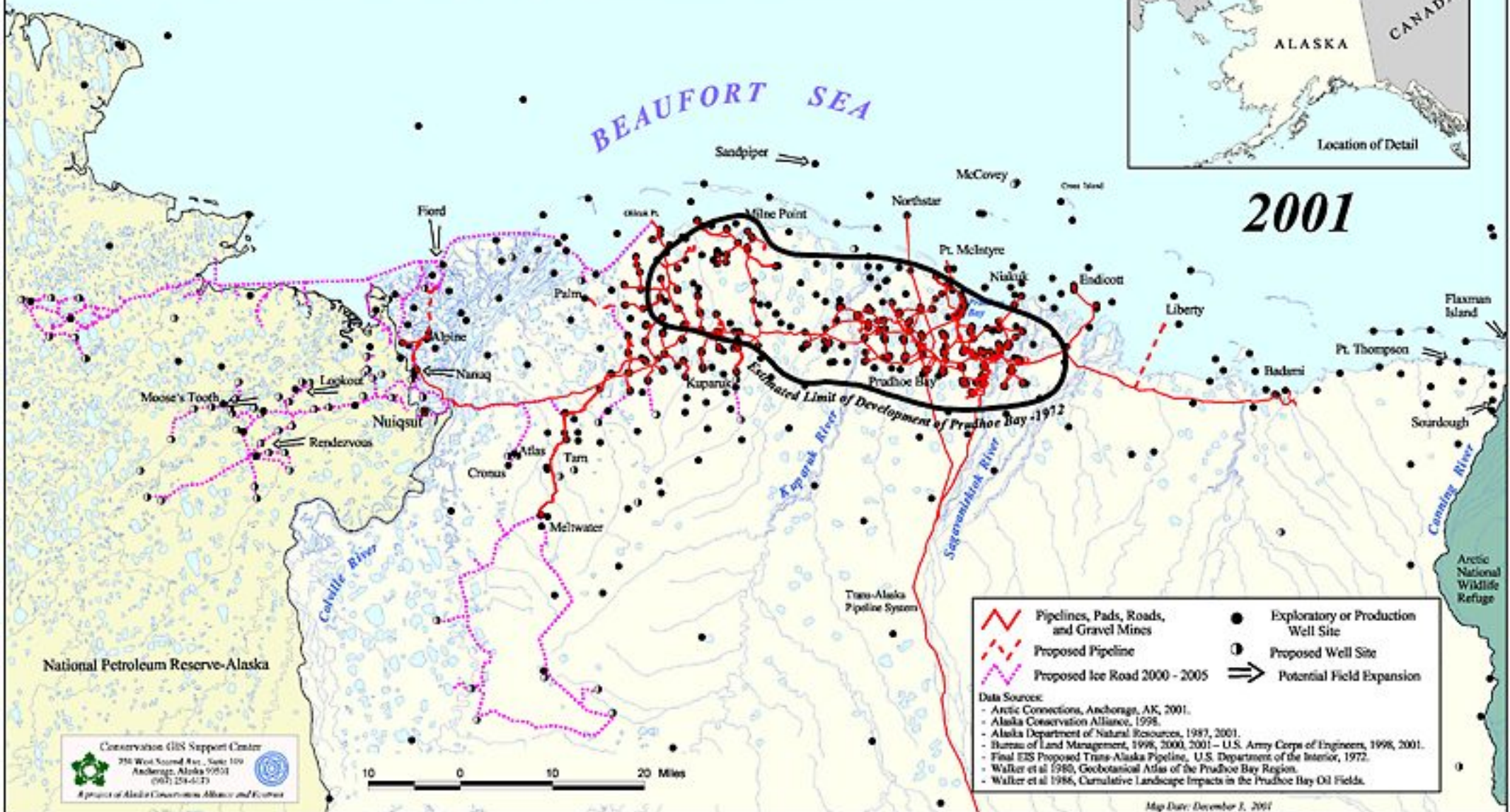
North Slope of Alaska



Oil Exploration & Development in America's Arctic



2001



National Petroleum Reserve-Alaska

Conservation GIS Support Center
 250 West Second Ave., Suite 100
 Anchorage, Alaska 99501
 (907) 259-4171

A project of Alaska Conservation Alliance and Ecotrust

	Pipelines, Pads, Roads, and Gravel Mines		Exploratory or Production Well Site
	Proposed Pipeline		Proposed Well Site
	Proposed Ice Road 2000 - 2005		Potential Field Expansion

Data Sources:

- Arctic Connections, Anchorage, AK, 2001.
- Alaska Conservation Alliance, 1998.
- Alaska Department of Natural Resources, 1987, 2001.
- Bureau of Land Management, 1998, 2000, 2001 - U.S. Army Corps of Engineers, 1998, 2001.
- Final EIS Proposed Trans-Alaska Pipeline, U.S. Department of the Interior, 1972.
- Walker et al 1980, Geobotanical Atlas of the Prudhoe Bay Region.
- Walker et al 1986, Cumulative Landscape Impacts in the Prudhoe Bay Oil Fields.

Map Date: December 1, 2001